

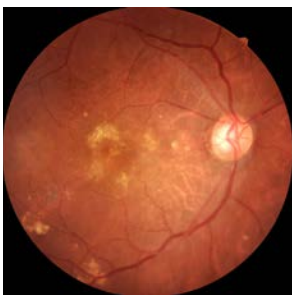
VIVICON

Non-Mydriatic Ophthalmic Camera

Vivicon brings new meaning to simplicity and ease of use with features that make this system the ideal choice for busy clinics with limited space. Fully automatic 3D tracking and image capture makes operation simple for the technician and comfortable for the patient. Retinal and external images can be reviewed on the touch-screen tablet or exported to an exam lane or office network.



Capture and review single or selected montage images.



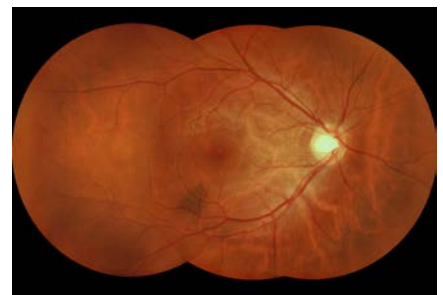
Age-Related Macular Degeneration



Branch Retinal Vein Occlusion

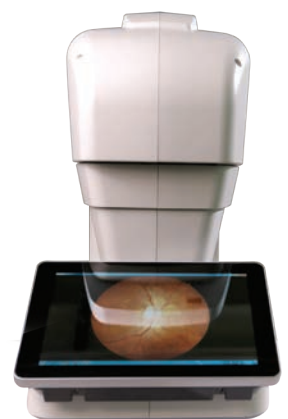


Diabetic Retinopathy



Montage of normal eye

Enter patient information, capture photos and compare images using the convenient touch-screen tablet.



Vivicon Features:

- **3D Auto Tracking and Alignment**
- **Automated Image Capture**
- **Montage**
- **Manual Mode**
- **Cornea Capture (external image)**
- **Small Footprint**



Technical Specifications:

Fundus image	Non-mydratic, color image
Field of view	≥ 45 degrees
Illumination for retina image (Capture)	White LED
Cornea Image (Capture)	White LED
Illumination during alignment to patient's retina	NIR LED
Focus Diopter adjustment range	-15D to +10D without compensation lens -30D to -10D or +5D to +30D with compensation lens
Minimum pupil size	4mm
Focus Adjustment	Auto/ Manual; Split image view
Image sensor	CMOS 12 Megapixel
Z-ranging (Working distance)	2 fiber dots
Working Distance	25mm from lens to cornea
Fixation	Internal; 10 points
Alignment	Fully automatic 3D tracking
Alignment Mode	Full Auto / Auto/ Manual
Chinrest	Motorized
Interface	USB 2.0 port, LAN, HDMI, WiFi (optional)
Input/ Output format	Image format: JPEG, PNG, DICOM (optional)
Display	10.1" LCD monitor, touch panel
Operation Range	Front / Back: 40mm Left/ Right: 90mm Up/ Down: 30mm
Motorized Chinrest Range	Up/ Down: 70mm
System Dimensions:	19"H x 11"W x 19"L