

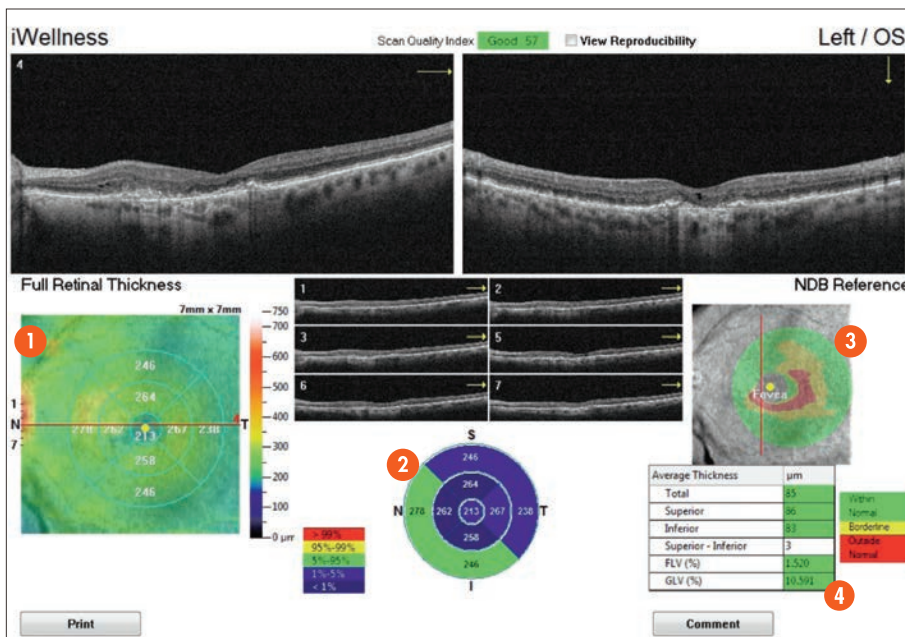
# The OCT Wellness Exam

A clear path to patient eye health

Exclusively from 

The OCT **WellnessExam**<sup>®</sup> is an Optovue exclusive available on all Optovue OCT systems that delivers a quick, easy OCT scan to promote better overall patient eye health.

Its usefulness stems from a **single, comprehensive report** that depicts:



- Retinal thickness and GCC<sup>®</sup> thickness with normative comparison
- Symmetry analysis
- FLV% and GLV%, proprietary Optovue GCC metrics that provide important information to aid in ocular disease diagnosis and management
- Eight high-resolution B-scans

**1 Retinal thickness map**  
with comparison to normative database displays areas of thickening or thinning that may be associated with conditions such as diabetic retinopathy

**2 ETDRS diagram**  
shows average retinal thickness by zone as compared to the normative database

**3 GCC thickness map**  
with comparison to normative database aids in the identification of thinning that may be related to glaucomatous changes

**4 FLV% and GLV%**  
are Optovue exclusive data points that aid in the prediction of visual field conversion in glaucoma suspects<sup>2</sup>

# The OCT Wellness Exam

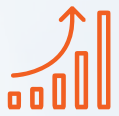
A clear path to patient eye health

Exclusively from  OPTOVUE

The OCT **Wellness Exam** is a powerful tool that helps you grow your practice while also providing a valuable revenue stream.



**Differentiate** your practice and retain patients by delivering a higher level of care



**Grow** your practice by identifying patients who may need monitoring or medical eye care



**Keep patients** in your practice longer by offering advanced imaging services



Create a **new revenue stream** to offset the cost of your OCT